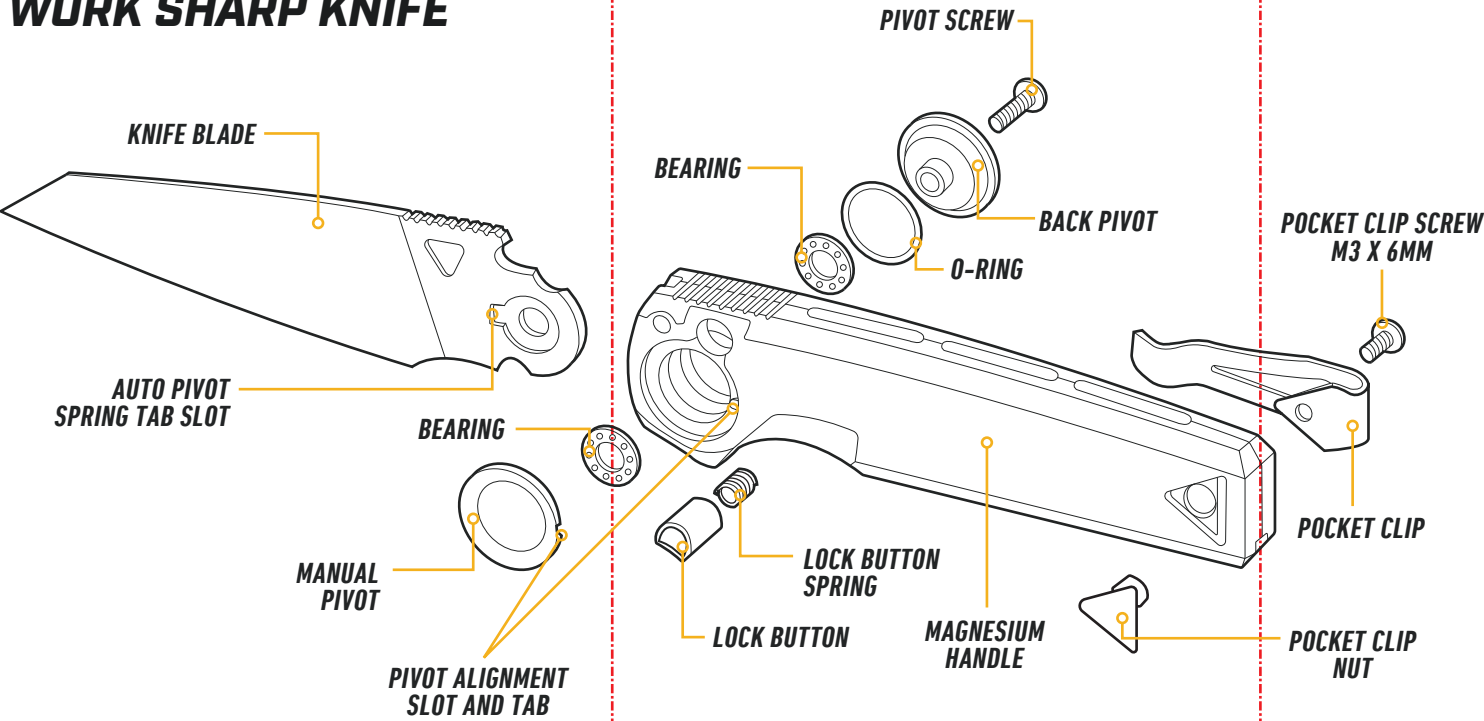


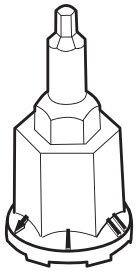
13.5 in

## GETTING TO KNOW YOUR WORK SHARP KNIFE



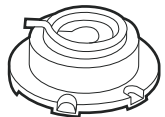
\* BLADE STEEL, SHAPE, AND HANDLE MATERIAL MAY VARY BETWEEN MODELS  
REVERSE TANTO SHARPENED TO 15°, DROP POINT SHARPENED TO 20°

### INCLUDED COMPONENTS



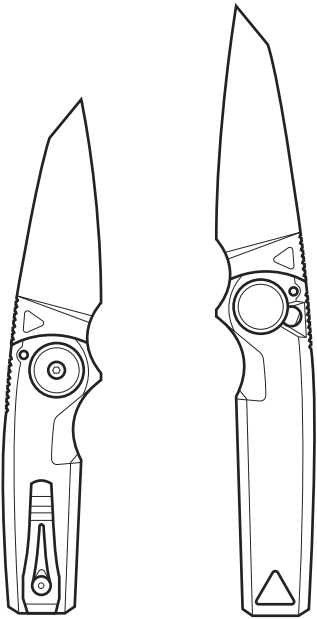
#### WRENCH TOOL

2mm Hex for pivot screw  
Magnetic Key for installing Auto Pivot



#### AUTO PIVOT

Note: Spring Tab and Alignment Slots



**WORK SHARP™  
KNIVES**

3.375 in

FRONT PAGE

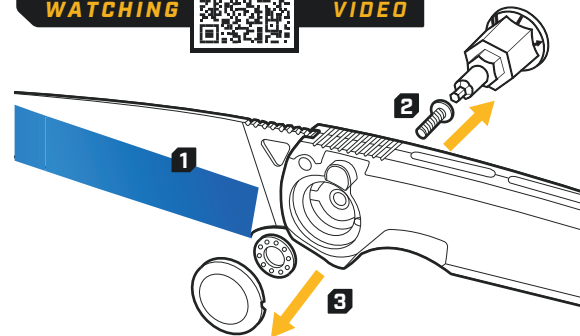
5.125 in

## HOW TO CHANGE YOUR PIVOT MECHANISM

LEARN BY WATCHING



HOW TO VIDEO

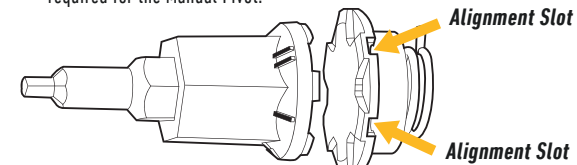


- 1 Open blade and cover the cutting edge with masking tape for safety.
  - 2 Use the provided tool to remove the Pivot Screw, set aside for later. Do not remove the Back Pivot or Blade.
  - 3 Remove the Manual Pivot and Bearing as shown. These can be put away and are not needed for the Auto function.
- **TIP:** Push on the Pivot Screw once loose to help unseat and remove the Pivot and Bearing.

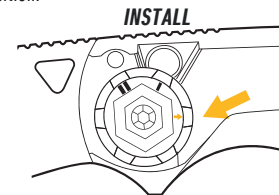
**⚠ WARNING!** Work Sharp™ Knives are incredibly sharp, always use with safety in mind. Read and follow these instructions for proper use and maintenance, Always cover the sharp cutting edge when servicing your knife.

### TIPS:

- Keep blade open in the locked position to secure lock button and blade.
- Front bearing NOT required when installing the Auto Pivot, bearing is only required for the Manual Pivot.

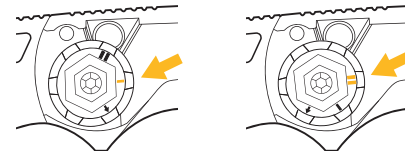


- 4 Attach Auto Pivot to Wrench Tool, aligning I and II markers to alignment slots inside Auto Pivot as shown above.
- 5 Set the Auto Pivot with Wrench Tool into handle with **arrow** at 3 o'clock INSTALL position.

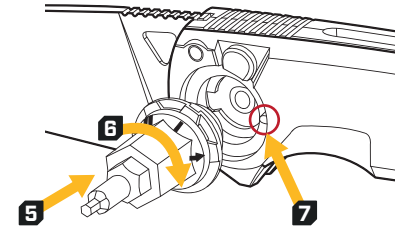


- 6 While maintaining **light** pressure on Wrench Tool into handle, rotate the Auto Pivot clockwise to POSITION 1 or POSITION 2. See examples below.

**POSITION 1** Slower Blade Deployment      **POSITION 2** Faster Blade Deployment



- 7 **STOP** and reference **Alignment Slot** locations in image above Step 4. Verify Auto Pivot is flush to handle and Alignment Slot is keyed into handle tab.



- 8 While pinching both front and back pivots together, remove wrench tool from Auto Pivot and use to install Pivot Screw. Lightly tighten Pivot Screw while ensuring both pivots remain fully seated in the handle.
- 9 Proper blade deployment and blade play adjustment is achieved through fine tuning of the Pivot Screw. Start with the Pivot Screw tight enough so blade does not **fully** deploy from closed. Loosen screw until you have achieved desired balance of smooth opening operation and blade play. Check for blade play with lock button fully depressed.

- **TIP:** If the Blade isn't moving smoothly or fails to open, re-check the Auto Pivot installation by repeating Steps 4-8 to ensure that the Spring Tab is properly engaged in the slot on the Blade and that both Pivots are fully seated in the handle.

**CAUTION!** This knife is very sharp (that's probably why you bought it)! Accordingly, this knife is potentially dangerous and should be treated with great care and respect. So, exercise caution when unwrapping, using, storing, and/or maintaining this knife. Work Sharp® assumes no responsibility for cuts, scratches, or other injuries/damage to you or your property resulting from the use of this knife.

## LIFETIME WARRANTY

This knife is covered by Work Sharp's Hassle Free Lifetime Warranty. We stand behind and support our products – contact us if you need assistance, parts, or service. Warranty for consumer not industrial or commercial use.



**WORK SHARP®**  
PO Box 730  
210 E. Hersey St.  
Ashland, OR 97520 USA

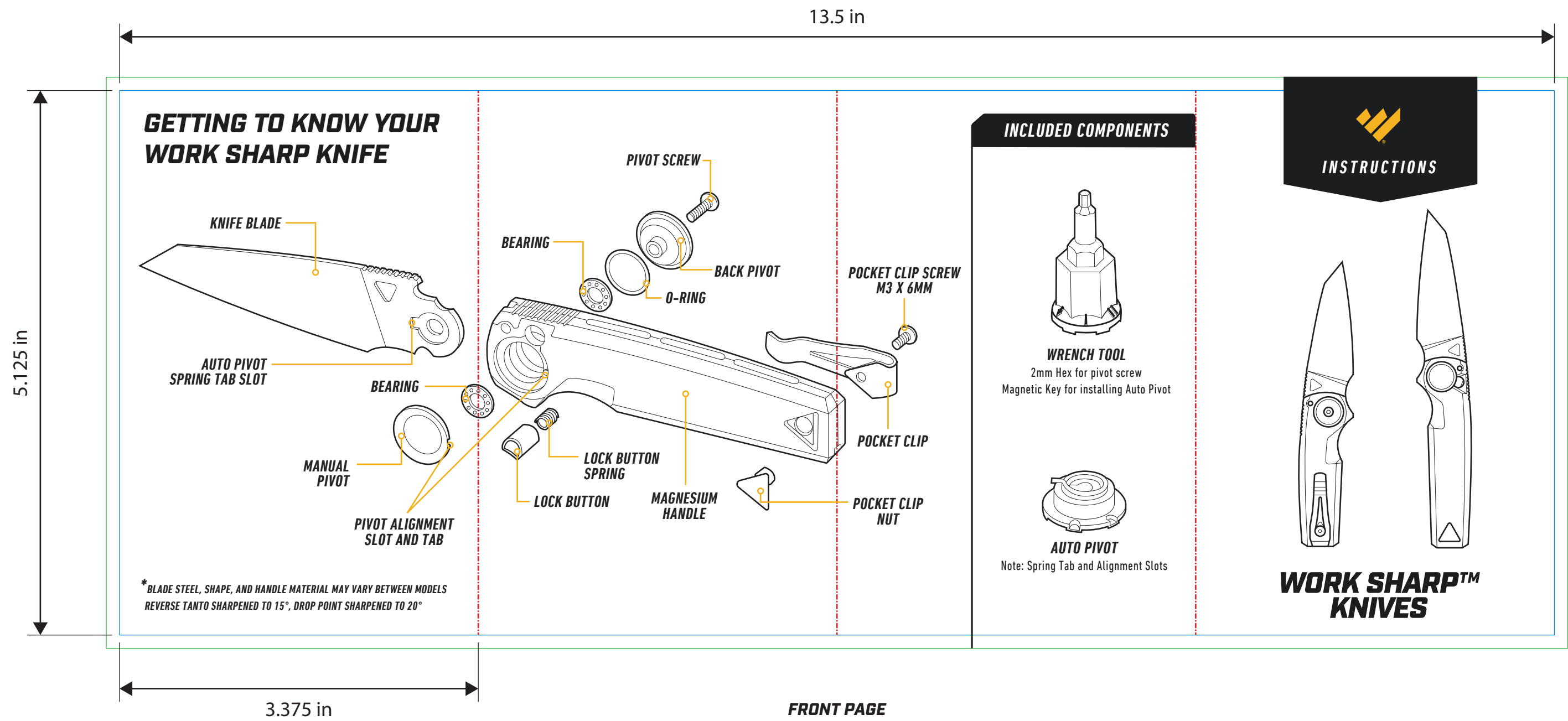
**QUESTIONS?** [WorkSharpTools.com](http://WorkSharpTools.com) / 1.800.418.1439






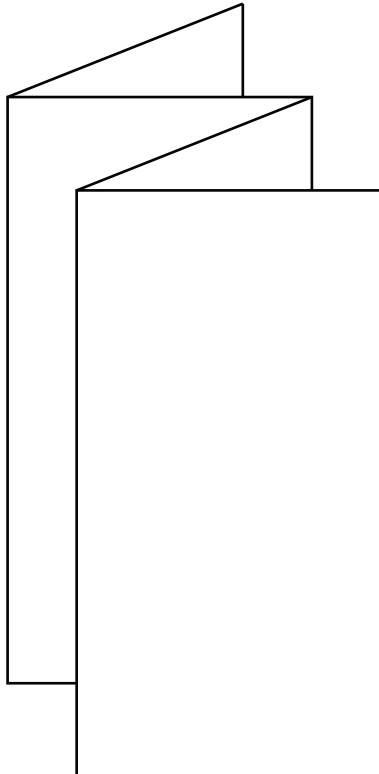
Responsibly Sourced Globally. Bench Built In America. Made for you.

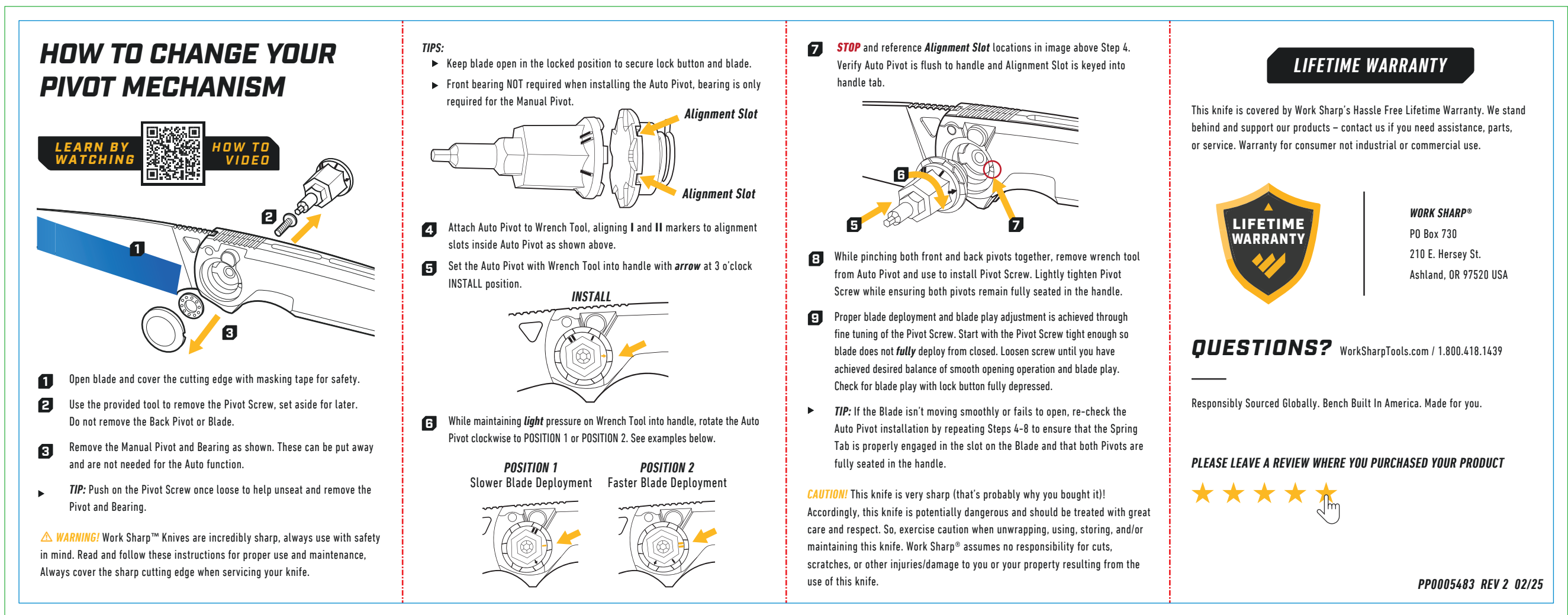
**PLEASE LEAVE A REVIEW WHERE YOU PURCHASED YOUR PRODUCT**



PP0005483 REV 2 02/25



<b>NOTES:</b> Accordion fold, total size 13.5in x 5.125in, folded 3.375in x 5.125in		<b>SPOT COLOR:</b>  PANTONE 7409C		<b>WORK SHARP</b> 210 E. HERSEY ST. ASHLAND, OR 97520 PHONE: (+1) 541-552-1301 FAX: 541-552-1377		<b>COLOR PALETTE:</b>  CYAN  MAGENTA  YELLOW  BLACK		 <b>4-Panel Accordion Fold</b>
<b>CUT:</b> _____								
<b>CREASE/FOLD:</b> _____								
<b>BLEED LINE:</b> _____								
<b>TITLE:</b> Work Sharp Knives User Guide (Universal)								
<b>MATERIAL:</b> 157 GSM Coated Art Paper		<b>PART#:</b> PP0005483						
<b>COATING:</b> None		<b>REV:</b> 2						
<b>FOLDED:</b> YES		<b>DATE:</b> 02/19/2025						
<b>REV NOTES:</b> Revised size of User Guide to use for Sprint 1 and Sprint 2 product boxes and artwork change.								



**BACK PAGE**